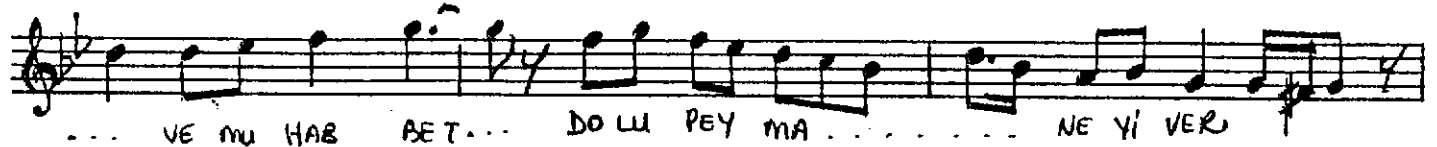
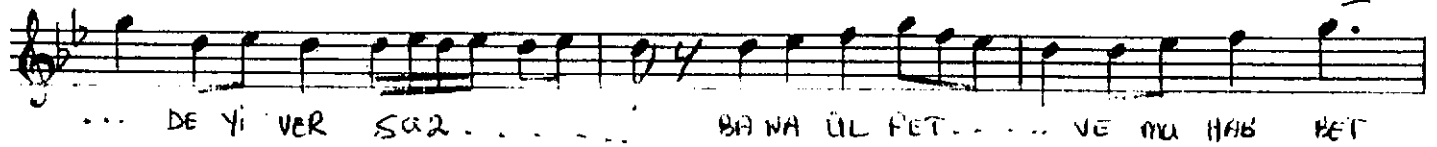
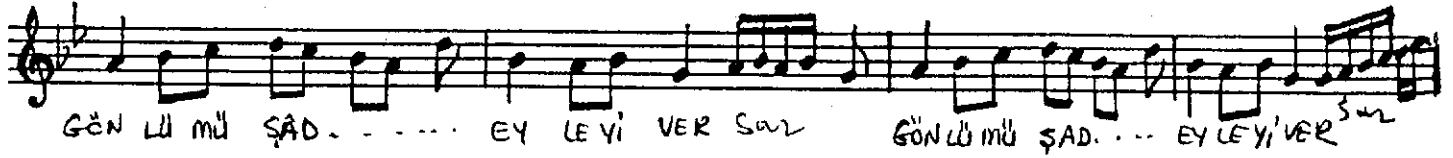
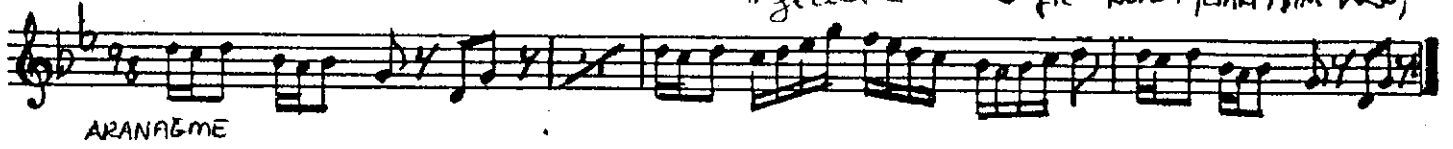


D: 180 Akak

NİHÂVEND ŞARKI

Geli ver bir gececik

Güfte - Beste: YERARİ ASIM ARSOY



A LI VER SAZ. BA NA VUS LAT. . . . BANA AŞK

BES TE LE RİN DEN. . . . GALI VER SAZ. . . . GALI VER SAZ

A. l.
SE Rİ LİP SAZ SER Nİ Pİ LE REK SAZ ZEV Kİ SA FÂ YA

DA LI VER ZEV Kİ SA FÂ YA DA LI VER SAZ . . .

BA NA VUS LAT BANA AŞK BES TE LE RİN DEN. . .

. . . . GALI VER SAZ BA NA VUS LAT. . . . BANA AŞK

BES TE LE RİN DEN. . . . GALI VER SAZ . . . GE Lİ VER SAZ . .

BİR GE CE ÇIK SAZ BİR GE CE ÇIK SAZ BİR GE CE ÇIK SAZ . . .
(Ağırbaşarak)